

**LPHCP-I-3D Landrace Pig Hepatocytes Cryopreserved Plateable for Induction assays and for 3D culture**  
**Cell Specification – Certificate of Analysis (CoA)**

Lot LPH250621-2

Batch Release: July 22, 2025

**Donor data**

Species: Landrace Pig

Gender: female

Age: 1 Month

**Cryopreservation and Thawing**

**Cryopreservation:**

Date: Juni 21, 2025  
Amount per vial:  $10.1 \times 10^6$  cells

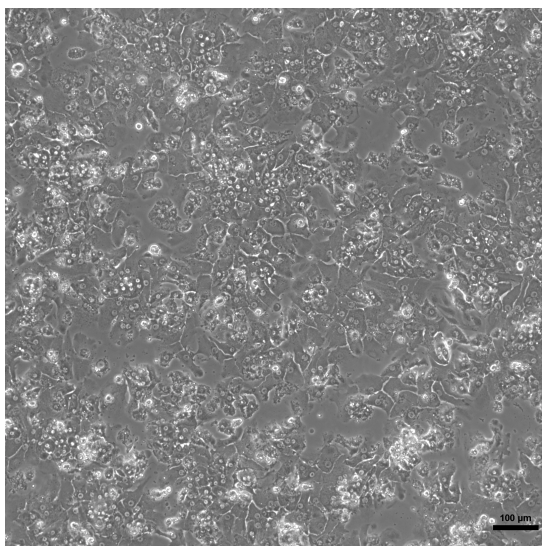
**Thawing:** n=1

Post-thaw viability: 96.0 %  
Post-thaw yield per vial:  $4.7 \times 10^6$  cells  
Recovery: 46.2 %

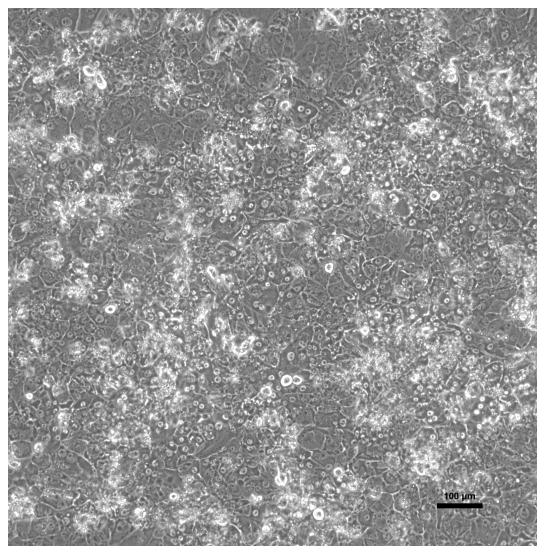
**Only one spin required. No washing step.**

**2D culture**

Phase contrast on day 1 after thawing  
(24well plate)



Phase contrast on day 3 after thawing  
(24well plate)



Recommended seeding density on collagen-coated plates:

24well plate – 300,000 cells/well // 96well plate – 50,000 cells/well.

Culture in Human Hepatocyte Maintenance Medium (HHMM).

CYP P450 activity in 2D culture after thawing:

pmol/(mg × min)

X-fold induction

Ethoxyresorufin-O-deethylation:

24well:  $27.7 \pm 0.89$

11.5

Induction with 25 µM β-Naphthoflavone

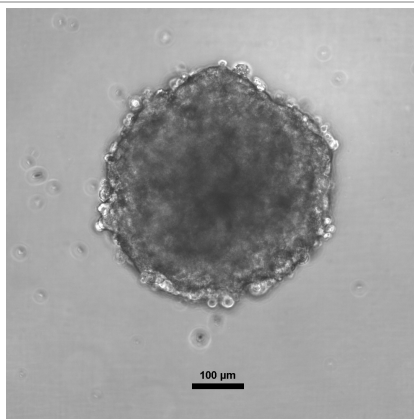
96well:  $58.2 \pm 6.4$

18.8

### 3D culture

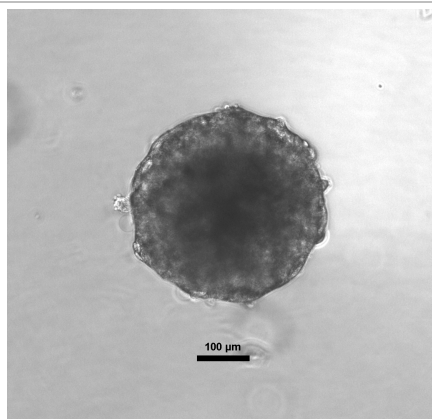
Cells seeded in 96well ULA round bottom plates (FaCellitate), 2,500 cells/well

day 4



scale bar 100 µm

day 14



scale bar 100 µm

### Suspension culture

Viability test on orbital shaker (Eppendorf Thermomixer C, 1000 rpm at 37 °C with  $0.5 \times 10^6$  cells in 0.5 ml HPM-Cryo):

Time (h)	0	1	2	3
Viability (%)	96.0	86.4	86.7	84.3

Note: Yield, viability, recovery and activity assays were performed at PRIMACYT using PRIMACYT's manual for thawing, plating and culture of primary cryopreserved hepatocytes.

**Note for thawing process: Only one spin at 100 x g, 10 min., 20 °C is required. No washing step needed.**

**Store at -150 °C or in the vapour phase of LN<sub>2</sub>**

This product should be considered as potential biohazard. Only intended for *in vitro* use.

Issued by: A. Alkufairi

Verified by: T. Krimmling