

**EHCP Equine Hepatocytes Cryopreserved Plateable  
Cell Specification – Certificate of Analysis (CoA)**

Lot EH250206

Batch Release: May 14, 2025

**Donor data**

Species: Equus caballus

Gender: female

Age: 26 years

Diagnosis: none

Therapy: none

**Cryopreservation and Thawing**

**Cryopreservation:**

Date: Feb 06, 2025

Amount per vial:  $10 \times 10^6$  cells

**Thawing: n=3**

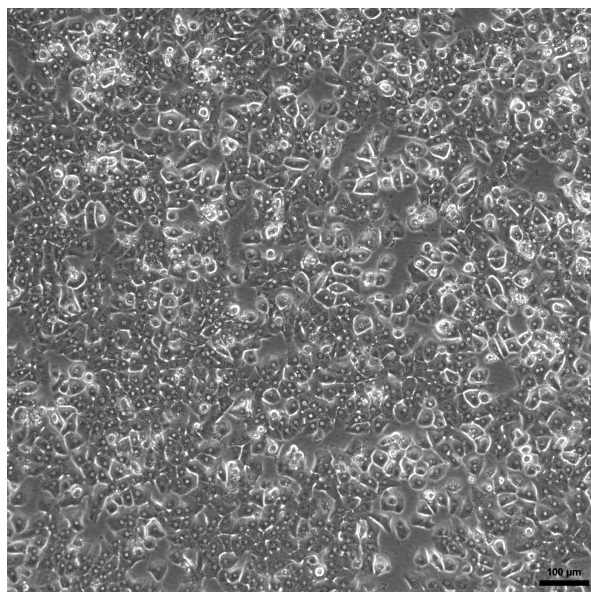
Post-thaw viability:  $86.9 \pm 3.3 \%$

Post-thaw yield per vial:  $8.0 \pm 1.3 \times 10^6$  cells

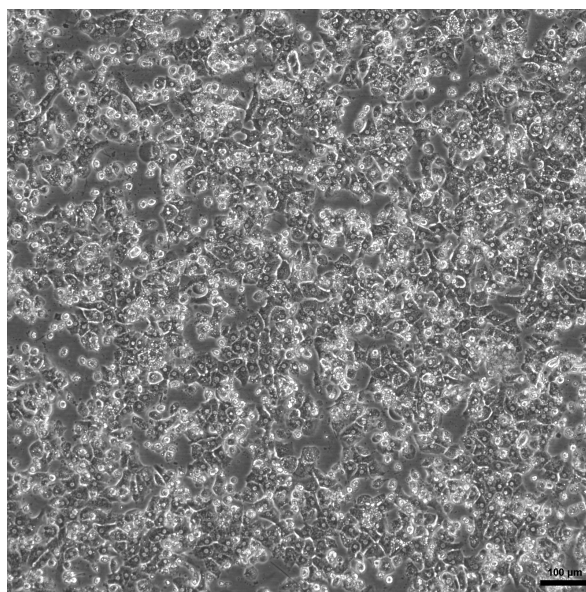
Recovery:  $79.5 \pm 13.3 \%$

**2D culture**

Phase contrast on day 1 after thawing  
(24well plate)



Phase contrast on day 3 after thawing  
(24well plate)



Recommended seeding density on collagen-coated plates:

24well plate – 600,000 cells/well // 96well plate – 80,000 cells/well.

Culture in Human Hepatocyte Maintenance Medium (HHMM).

CYP P450 activity in 2D culture 3 days after thawing:  
Ethoxyresorufin-O-deethylation

pmol/(mg × min)  
96well: 14.61 ± 3.1

### Suspension culture

Viability test on orbital shaker (Eppendorf Thermomixer C, 1000 rpm at 37 °C with 0.5 x 10<sup>6</sup> cells in 0.5 ml HPM-Cryo):

Time (h)	0	1	2	3	4
Viability (%)	86.9	69.0	64.5	60.3	57.9

Note: Yield, viability, recovery and activity assays were performed at PRIMACYT using PRIMACYT's manual for thawing, plating and culture of primary cryopreserved hepatocytes.

**Store at -150 °C or in the vapour phase of LN<sub>2</sub>**

This product should be considered as potential biohazard. Only intended for *in vitro* use.

Issued by: A. Sattler

Verified by: T. Krimmling