

**EHCP Equine Hepatocytes Cryopreserved Plateable
Cell Specification – Certificate of Analysis (CoA)**

Lot EH250206-1

Batch Release: February 26, 2025; updated May 13, 2025

Donor data

Species: Equus caballus

Gender: female

Age: 26 years

Diagnosis: none

Therapy: none

Cryopreservation and Thawing

Cryopreservation:

Date: Feb 06, 2025

Amount per vial: 7.8×10^6 cells

Thawing: n=1

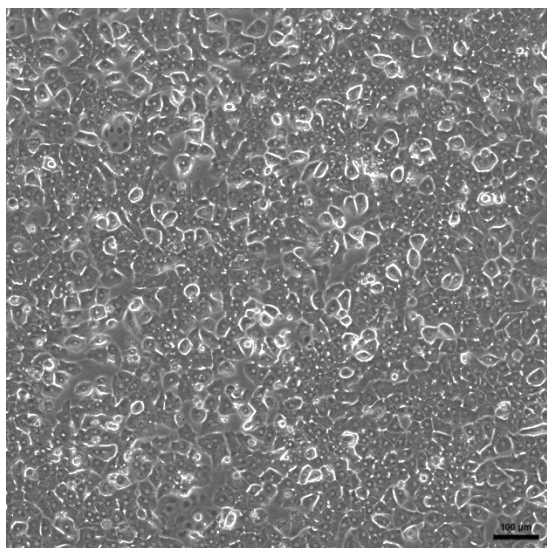
Post-thaw viability: 93.7 %

Post-thaw yield per vial: 5.5×10^6 cells

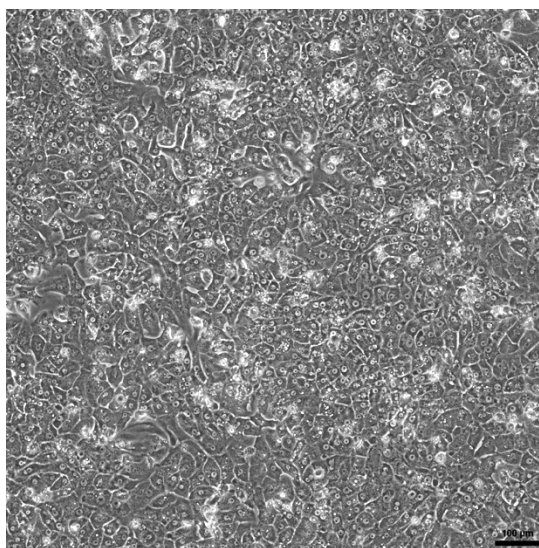
Recovery: 70.8 %

2D culture

Phase contrast on day 1 after thawing
(24well plate)



Phase contrast on day 3 after thawing
(24well plate)



Recommended seeding density on collagen-coated plates:

24well plate – 400,000 cells/well // 96well plate – 70,000 cells/well.

Culture in Human Hepatocyte Maintenance Medium (HHMM).

CYP P450 activity in 2D culture 3 days after thawing: Ethoxyresorufin-O-deethylation	pmol/(mg × min) 24well: 7.01 ± 0.69 96well: 7.9 ± 0.42
---	--

Suspension culture

Viability test on orbital shaker (Eppendorf Thermomixer C, 1000 rpm at 37 °C with 0.5 x 10⁶ cells in 0.5 ml HPM-Cryo):

Time (h)	0	1	2	3	4	5
Viability (%)	93.7	76.7	70.5	81.8	61.8	78.5

Note: Yield, viability, recovery and activity assays were performed at PRIMACYT using PRIMACYT's manual for thawing, plating and culture of primary cryopreserved hepatocytes.

Store at -150 °C or in the vapour phase of LN₂

This product should be considered as potential biohazard. Only intended for *in vitro* use.

Updated by: A. Sattler	Verified by: T. Krimmling
------------------------	---------------------------