

**CHCP-I-3D Cynomolgus Hepatocytes Cryopreserved Plateable for Induction assays and for 3D culture**  
**Cell Specification – Certificate of Analysis (CoA)**

Lot CH240516

Batch Release: July 29, 2024

**Donor data**

Species: *Macaca fascicularis*

Gender: female

Age: 7 years 3 months

**Cryopreservation and Thawing**

**Cryopreservation:**

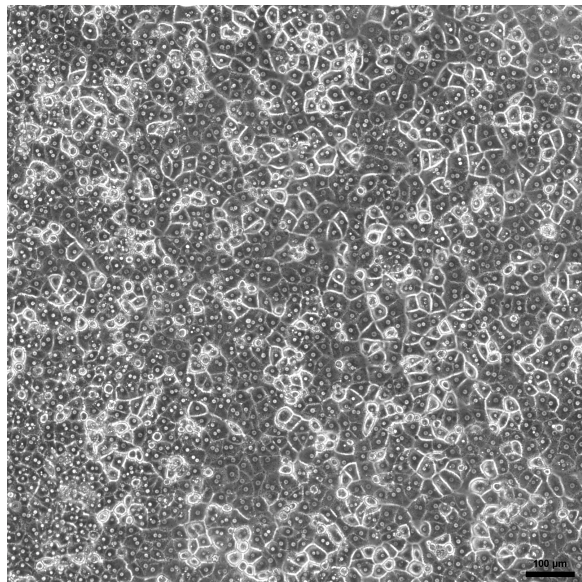
Date: May 16, 2024  
Amount per vial: 10.0 x 10<sup>6</sup> cells

**Thawing:** n=1

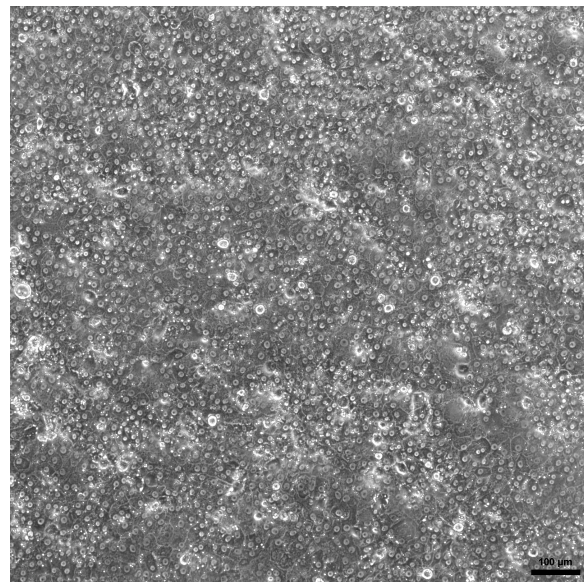
Post-thaw viability: 95.9 %  
Post-thaw yield per vial: 6.5 x 10<sup>6</sup> cells  
Recovery: 65 %

**2D culture**

Phase contrast on day 1 after thawing  
(24well plate)

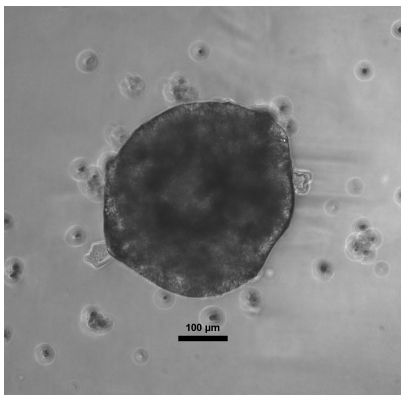
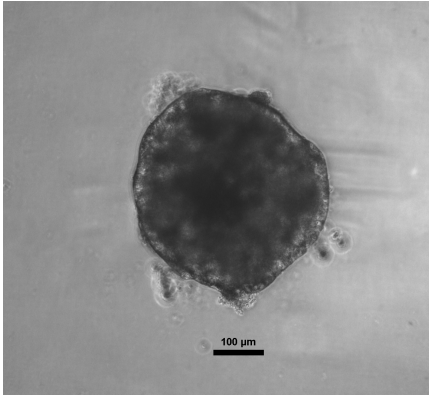


Phase contrast on day 3 after thawing  
(24well plate)



Recommended seeding density on collagen-coated plates:  
24well plate – 400,000 cells/well // 96well plate – 80,000 cells/well.  
Culture in Human Hepatocyte Maintenance Medium (HHMM).

CYP P450 activity in 2D culture after thawing: Ethoxyresorufin-O-deethylation: Induction with 25 µM β-Naphthoflavone	pmol/(mg × min) 24well: 42.9 ± 3.6 96well: 89.9 ± 25.5	X-fold induction 3.4 4.7
--	--	--------------------------------

<b>3D culture</b>	
Cells seeded in 96well ULA round bottom plates (FaCellitate), 2,500 cells/well	
day 8	day 10
 <p style="text-align: center;">scale bar 100 µm</p>	 <p style="text-align: center;">scale bar 100 µm</p>

<b>Suspension culture</b>						
Viability test on orbital shaker (Eppendorf Thermomixer C, 1000 rpm at 37 °C with 0.5 x 10 <sup>6</sup> cells in 0.5 ml HPM-Cryo):						
Time (h)	0	1	2	3	4	5
Viability (%)	95.9	89.6	89.3	91.0	89.2	87.6
<p>Note: Yield, viability, recovery and activity assays were performed at PRIMACYT using PRIMACYT's manual for thawing, plating and culture of primary cryopreserved hepatocytes.</p> <p><b>Store at -150 °C or in the vapour phase of LN<sub>2</sub></b></p> <p>This product should be considered as potential biohazard. Only intended for <i>in vitro</i> use.</p>						

Issued by: A. Sattler	Verified by: T. Krimmling
-----------------------	---------------------------