

HHCP-I-3D Human Hepatocytes Cryopreserved Plateable for Induction assays and for 3D culture
Cell Specification – Certificate of Analysis (CoA)

Lot HH240404

Batch Release: May 2, 2024

Donor data

Species: Human

Gender: female

Age: 81 years

Diagnosis: Liver metastases with rectal carcinoma

Medical History: Hypertension

Therapy: Hemihepatectomy right

Medication: ASS, Atorvastatin, Ramipril, Amlodipin

Serology: HAV, HBV, HCV, HIV 1/2: negative

Cryopreservation and Thawing

Cryopreservation:

Date: Apr 04, 2024

Amount per vial: 10.0 x 10⁶ cells

Thawing: n=1

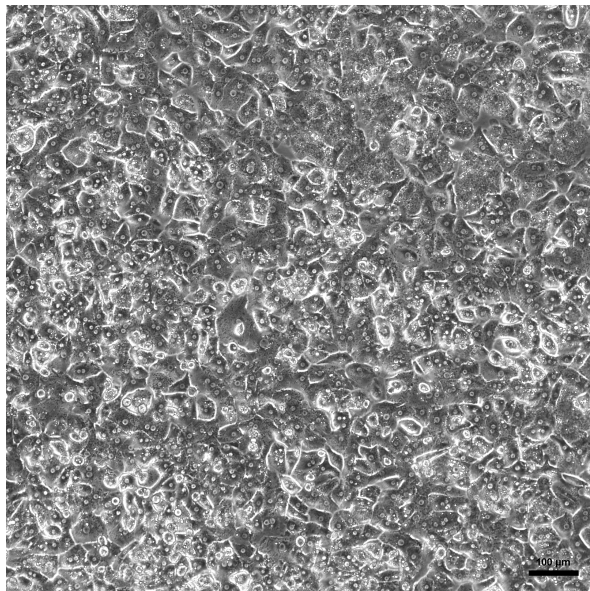
Post-thaw viability: 91.2 %

Post-thaw yield per vial: 3.64 x 10⁶ cells

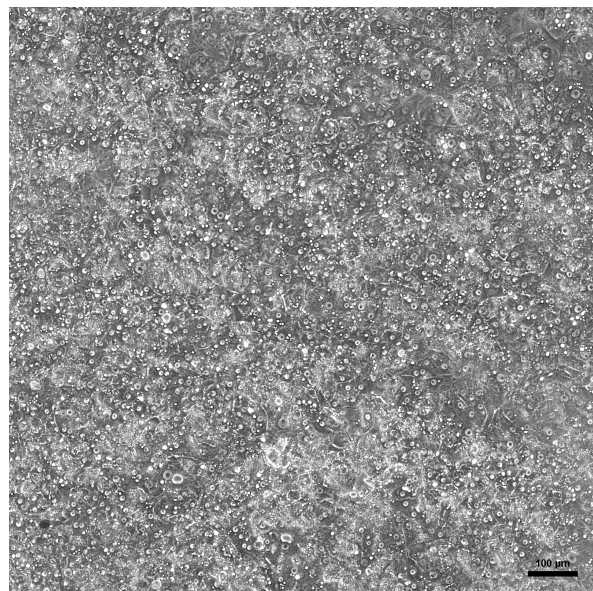
Recovery: 36.4 %

2D culture

Phase contrast on day 1 after thawing
(24well plate)



Phase contrast on day 3 after thawing
(24well plate)



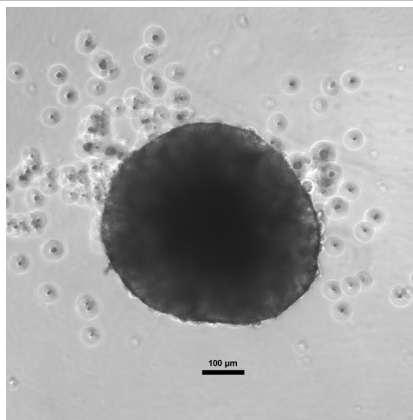
Recommended seeding density on collagen-coated plates:
24well plate – 400,000 cells/well // 96well plate – 90,000 cells/well.
Culture in Human Hepatocyte Maintenance Medium (HHMM).

CYP P450 activity in 2D culture after thawing:	pmol/(mg × min)	X-fold induction
Ethoxyresorufin-O-deethylation:	24well: 11.38 ± 0.09	5.5
Induction with 25 µM β-Naphthoflavone	96well: 20.69 ± 1.96	11.2

3D culture

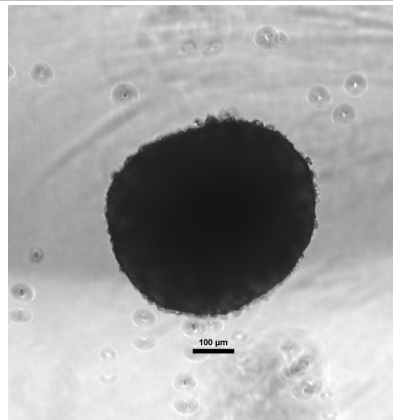
Cells seeded in 96well ULA round bottom plates (FaCellitate), 2,500 cells/well

day 9



scale bar 100 µm

day 11



scale bar 100 µm

Issued by: A. Sattler, J. Schuldt

Verified by: T. Krimmling