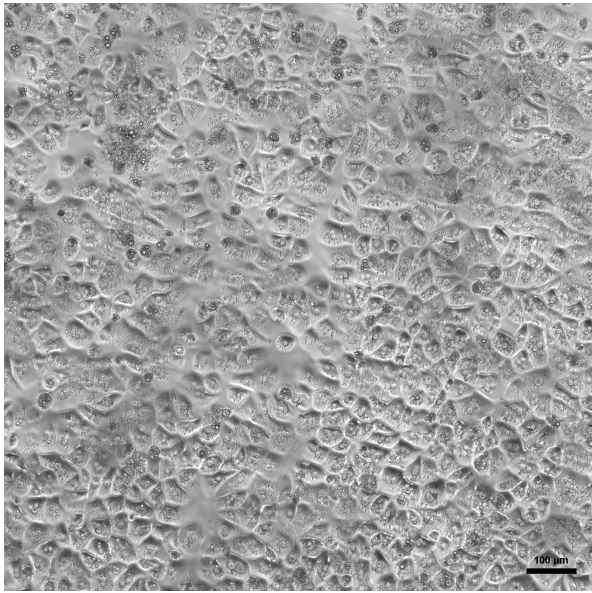
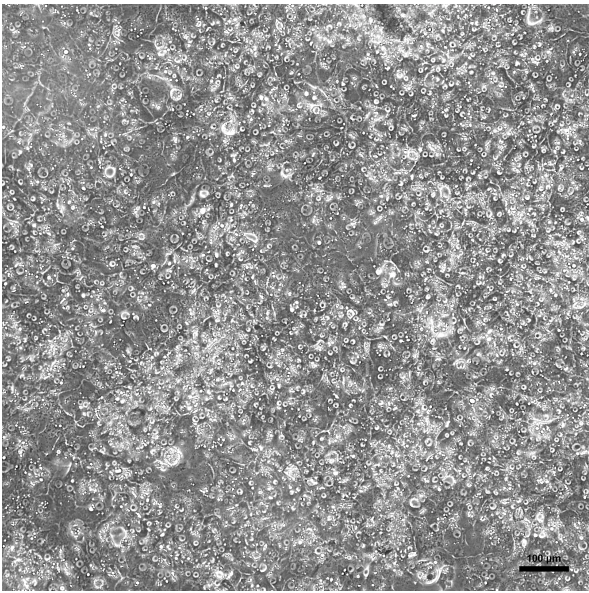


HHCP-I Human Hepatocytes Cryopreserved Plateable for Induction assays Cell Specification – Certificate of Analysis (CoA)	
Lot HH240222	Batch Release: May 2, 2024

Donor data	
Species: Human	Gender: female Age: 62 years
Diagnosis: Rezidiv HCC (Hepatocellular carcinoma) Medical History: Hypertension	Therapy: Hemihepatectomy right Medication: Amlodipin, Candesartan Serology: HAV, HBV, HCV, HIV 1/2: negative

Cryopreservation and Thawing	
Cryopreservation: Date: Feb 22, 2024 Amount per vial: 5.4 x 10 ⁶ cells	Thawing: n=1 Post-thaw viability: 94.8 % Post-thaw yield per vial: 2.0 x 10 ⁶ cells Recovery: 37 %

2D culture	
Phase contrast on day 1 after thawing (24well plate)	Phase contrast on day 3 after thawing (24well plate)
	

Recommended seeding density on collagen-coated plates:
24well plate – 300,000 cells/well

Culture in Human Hepatocyte Maintenance Medium (HHMM).

CYP P450 activity in 2D culture after thawing:

pmol/(mg × min)
24well: 10.16 ± 0.18

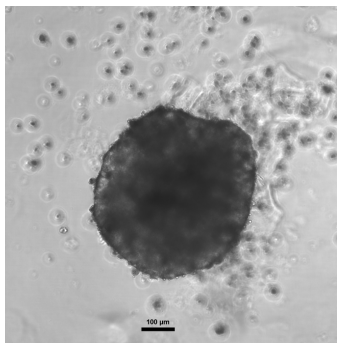
X-fold induction
3.5

Ethoxyresorufin-O-deethylation:
Induction with 25 µM β-Naphthoflavone

3D culture

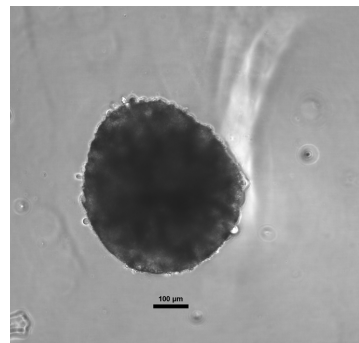
Cells seeded in 96well ULA round bottom plates (FaCellitate), 2,500 cells/well

day 9



scale bar 100 µm

day 11



scale bar 100 µm

Note: Yield, viability, recovery and activity assays were performed at PRIMACYT using PRIMACYT's manual for thawing, plating and culture of primary cryopreserved hepatocytes.

Store at -150 °C or in the vapour phase of LN₂

This product should be considered as potential biohazard. Only intended for *in vitro* use.

Issued by: A. Sattler, J. Schuldt

Verified by: T. Krimmling