

**MHCP Mouse Hepatocytes Cryopreserved Plateable – Certificate of Analysis (CoA)**

Lot MH210603 (Pool of 2)

Batch Release: April 24, 2024

**Donor data**

Species: Mouse (*Mus musculus*)  
Strain: CD-1

Gender: 2 females  
Age: approx. 2 months

**Cryopreservation and Thawing**

**Cryopreservation:**

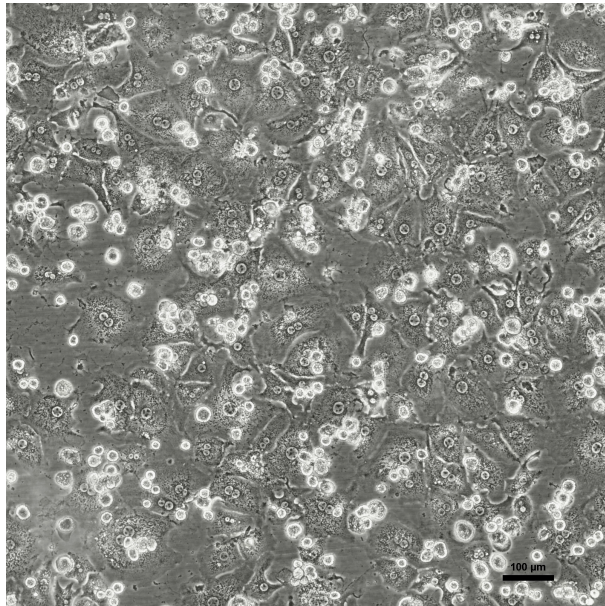
Date: Jun 03, 2021  
Amount per vial:  $6.3 \times 10^6$  cells

**Thawing:** n=1

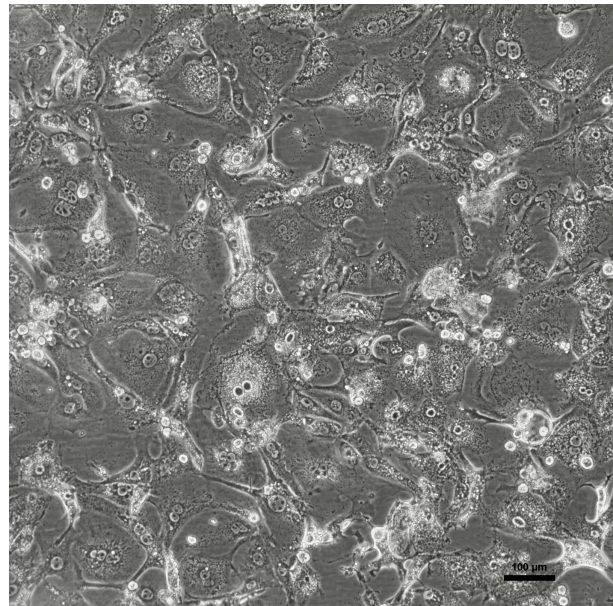
Post-thaw viability: 81.6 %  
Post-thaw yield per vial:  $2.5 \times 10^6$  cells  
Recovery: 40 %

**2D culture**

Phase contrast on day 1 after thawing  
(24well plate)



Phase contrast on day 3 after thawing  
(24well plate)



Recommended seeding density on collagen-coated plates:

24well plate – 160,000 cells/well

Culture in Human Hepatocyte Maintenance Medium (HHMM).

Note: Yield, viability, recovery and activity assays were performed at PRIMACYT using PRIMACYT's manual for thawing, plating and culture of primary cryopreserved hepatocytes.

**Store at -150 °C or in the vapour phase of LN<sub>2</sub>**

This product should be considered as potential biohazard. Only intended for *in vitro* use.

**Detailed animal information and husbandry conditions**

Species	Mouse ( <i>Mus musculus</i> )
Strain	CD-1, IGS (International Genetic Standard)
Vendor	Charles River Germany GmbH & Co. KG, Sulzbach, FRG
Food	Altromin Maintenance diet for rats/mice (ad libitum), Altromin, Lage, FRG
Water	ad libitum
Light/Dark cycle	regulated day/night cycle using artificial and natural light, 10-14 hours light daily
Temperature	20-24 °C
Humidity	40-70 %
Bedding	Hugro hemp bedding, Saerbeck, FRG
Cage	Tecniplast Eurostandard Type III and Type IV incl. behavioural enrichments for the animals

Animals were housed under veterinary control and allowed to acclimate  $\geq 7$  days before use. Animal housing permits according to §11 Abs. 1 TSchG, dated March 22, 2022 under supervision of Veterinary Office of Landkreis Ludwigslust/Parchim, FRG. Hepatocytes were obtained from a non-infectious, non-contagious, healthy animal. The animal does not originate from a facility conducting work or research with animal pathogens.

Issued by: A. Sattler

Verified by: K. Damrau