

**MHCP Mouse Hepatocytes Cryopreserved Plateable
Cell Specification – Certificate of Analysis (CoA)**

Lot MH230201

Batch Release: December 13, 2023

Donor data

Species: Mouse (*Mus musculus*)
Strain: CD-1

Gender: female
Age: approx. 11 months

Cryopreservation and Thawing

Cryopreservation

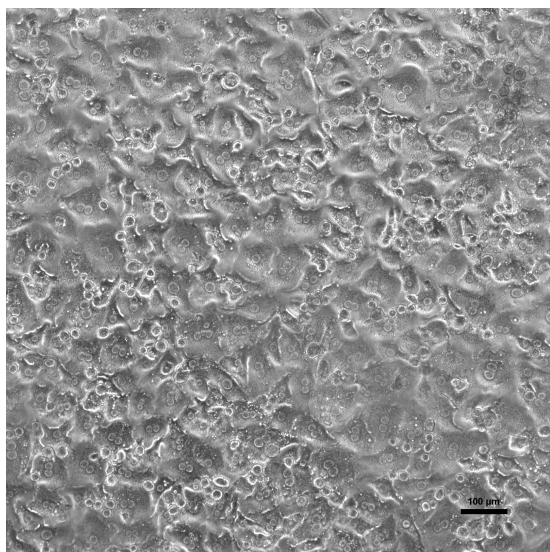
Date: Feb 01, 2023
Amount per vial: 7×10^6 cells

Thawing: n=1

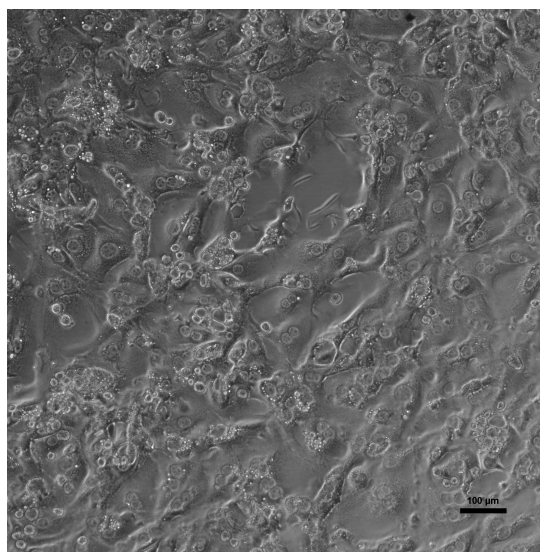
Post-thaw viability: 84 %
Post-thaw yield per vial: 3.25×10^6 cells
Recovery: 46.4 %

2D culture

Phase contrast on day 1 after thawing
(24well plate)



Phase contrast on day 3 after thawing
(24well plate)



Recommended seeding density on collagen-coated plates:
24well plate – 120,000 cells/well // 96well plate – 20,000 cells/well
Culture in Human Hepatocyte Maintenance Medium (HHMM).

Note: Yield, viability, recovery and activity assays were performed at PRIMACYT using PRIMACYT's manual for thawing, plating and culture of primary cryopreserved hepatocytes.

Store at -150 °C or in the vapour phase of LN₂

This product should be considered as potential biohazard. Only intended for *in vitro* use.

Detailed animal information and husbandry conditions	
Species	Mouse (Mus musculus)
Strain	CD-1, IGS (International Genetic Standard)
Vendor	Charles River Germany GmbH & Co. KG, Sulzbach, FRG
Food	Altromin Maintenance diet for rats/mice (ad libitum), Altromin, Lage, FRG
Water	ad libitum
Light/Dark cycle	regulated day/night cycle using artificial and natural light, 10-14 hours light daily
Temperature	20-24 °C
Humidity	40-70 %
Bedding	Hugro hemp bedding, Saerbeck, FRG
Cage	Tecniplast Eurostandard Type III and Type IV incl. behavioural enrichments for the animals
<p>Animals were housed under veterinary control and allowed to acclimate ≥ 7 days before use. Animal housing permits according to §11 Abs. 1 TSchG, dated March 20, 2017 and March 22, 2022 under supervision of Veterinary Office of Landkreis Ludwigslust/Parchim, FRG. Hepatocytes were obtained from a non-infectious, non-contagious, healthy animal. The animal does not originate from a facility conducting work or research with animal pathogens.</p>	
Issued by: A. Sattler	Verified by: K. Damrau