

## CERTIFICATE OF ANALISYS

**Lot#:** CyHuf19006-SC-P2-Z

### PRODUCT DESCRIPTION

**Reference:** HuSC

**Product:** Cryopreserved Human Stellate Cells

**Cellular passage:** P2

**Size/Quantity:** >100.000 cells/vial

**Isolation date:** 18<sup>th</sup> July 2019

**Storage conditions:** -196°C using LN<sub>2</sub>

**Sterility test:** negative for bacteria, yeast, and fungi

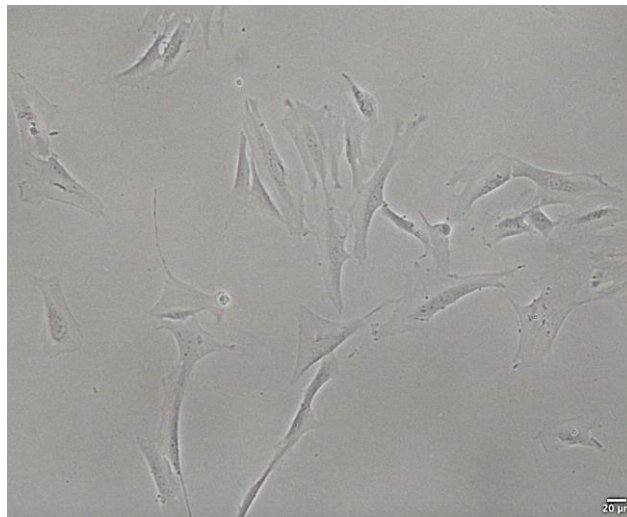
### DONOR DEMOGRAPHICS

Species	Gender	Race	Age	BMI	Smoker	Alcohol Use	Drug Use
Human	Female	Caucasian	65	26.56	No	No	No
Pathology			Serological Data <sup>1</sup>				
Colorectal Cancer			Tested negative less than 3 months before surgery				

Patient informed consent was obtained. <sup>1</sup>The donor was serologically tested negative for following infectious diseases: HIV, Hepatitis B, and Hepatitis C. Donor medical history was also examined prior to accepting this donor. *For donor's medication information, please contact us.*

### CHARACTERIZATION FOR HUMAN STELLATE CELLS

Post Thaw Lot information	
<b>Number of viable cells/vial:</b>	> 100.000
<b>Cell seeding density (cells/cm<sup>2</sup>):</b>	5.000-8.000
Cell morphology	

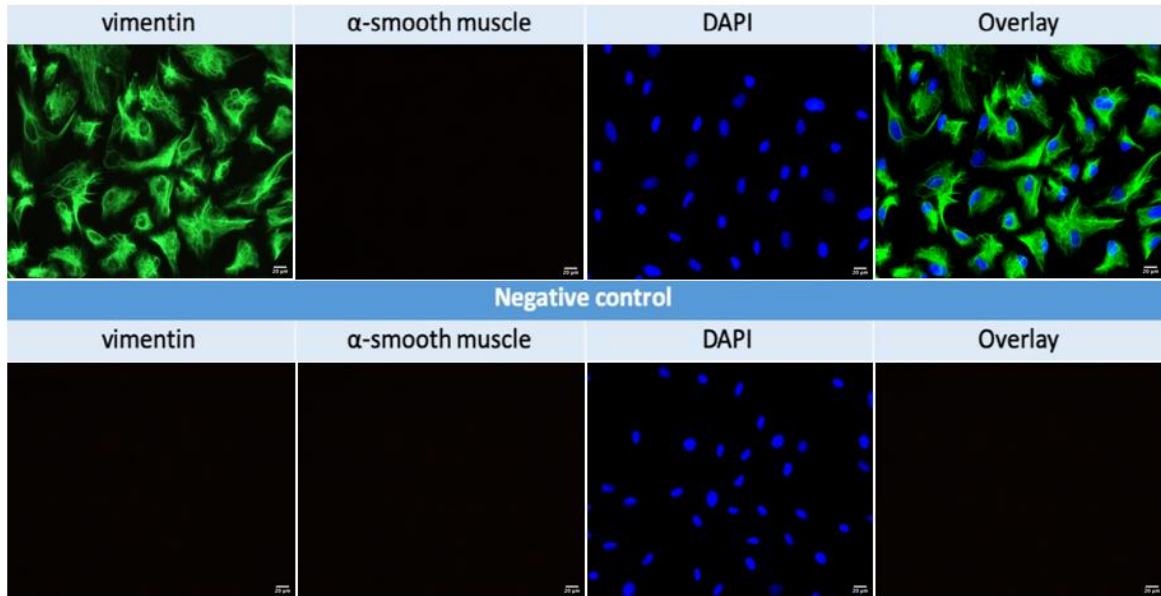


Human stellate cells were thawed and seeded according to BeCYtes Biotechnologies protocol. The number of cells and viability post-thawing was assessed by using the trypan blue exclusion assay. Phase-contrast image 3 days after seeding is shown on the panel.

**For basic research use only**, not to be used for clinical or diagnostic applications. Products distributed by BeCYtes Biotechnologies may contain human material that should be treated as potentially biohazardous.

### IMMUNOFLUORESCENCE ANALYSIS

Human stellate cells are positive for vimentin and negative for  $\alpha$ -smooth muscle actin when they are quiescent. When they become activated, they start to express  $\alpha$ -smooth muscle actin.





Cells were cultured on 8 well chamber slide till reach the confluence. The first panel shows green immunofluorescence for vimentin which is evident in the cell body and cytoplasmic processes in the cultured stellate cells. Red immunofluorescence for  $\alpha$ -smooth muscle actin is negative. Blue immunofluorescence for DAPI shows the cellular nuclei. Negative controls are showed on the bottom of the panel with all the markers used for the SC.

**If you need help for an experiment, just contact us, our experts will be pleased to assist you.**

### CERTIFICATION:

*The viability and performance of the human stellate cells provided depend primarily on the use of appropriate media and reagents, as well as the use of sterile plastics. Likewise, proper handling protocols must be followed. Please note that if these parameters are not carefully considered, the cellular response obtained in the assays may be lower than expected.*

Name	Title	Signature	Cytes Biotechnologies, S.L.	Date
Pilar Sainz de la Maza	Quality Manager			03/04/23

**For basic research use only**, not to be used for clinical or diagnostic applications. Products distributed by BeCYtes Biotechnologies may contain human material that should be treated as potentially biohazardous.