

BHCP Beagle Hepatocytes Cryopreserved Plateable Cell Specification – Certificate of Analysis (CoA)

Lot BH170518-2

Batch Release: August 01, 2023

Donor data

Species: Beagle

Gender: female

Age: approx. 7 months

Cryopreservation and Thawing

Cryopreservation:

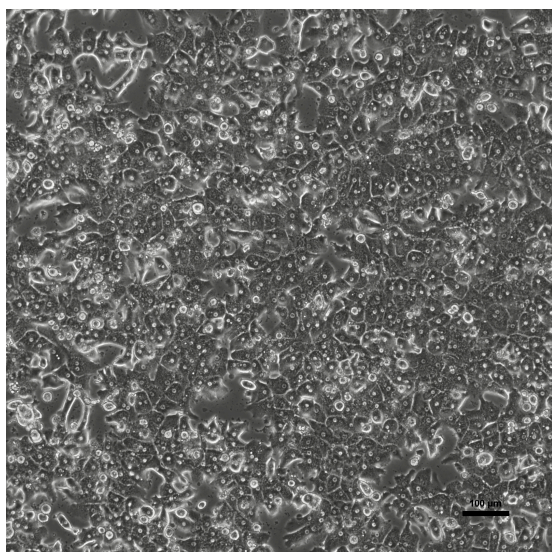
Date: May 18, 2017
Amount per vial: 9.98×10^6 cells

Thawing: n=1

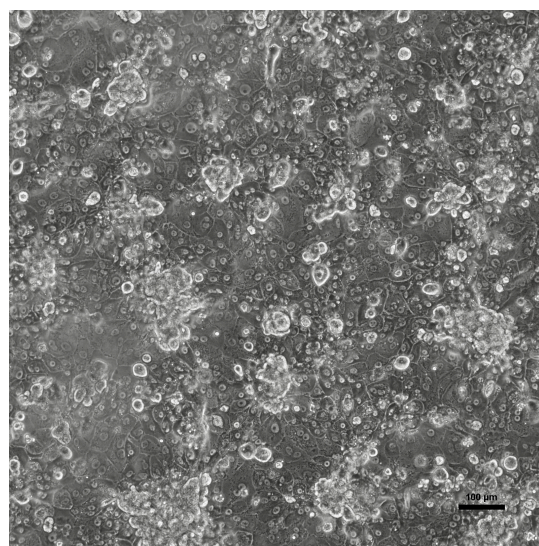
Post-thaw viability: 86.6 %
Post-thaw yield per vial: 6.18×10^6 cells
Recovery: 61.9 %

2D culture

Phase contrast on day 1 after thawing
(24well plate)



Phase contrast on day 3 after thawing
(24well plate)



Recommended seeding density on collagen-coated plates:

24well plate – 400,000 cells/well

Culture in Human Hepatocyte Maintenance Medium (HHMM).

Suspension culture

Viability test on orbital shaker (Eppendorf Thermomixer C, 1000 rpm at 37 °C with 0.5×10^6 cells in 0.5 ml HPM-Cryo):

Time (h)	0	0.5	1	1.5	2	3	4	5
Viability (%)	86.6	80.9	76.7	74.9	73.4	80.4	75.6	77.7

Note: Yield, viability, recovery and activity assays were performed at PRIMACYT using PRIMACYT's manual for thawing, plating and culture of primary cryopreserved hepatocytes.

Store at -150 °C or in the vapour phase of LN₂

This product should be considered as potential biohazard. Only intended for *in vitro* use.

Issued by: A. Alkufairi

Verified by: K. Damrau