

**HHCP Human Hepatocytes Cryopreserved Plateable
Cell Specification – Certificate of Analysis (CoA)**

Lot HH140219

Batch Release: July 03, 2023

Donor data

Species: Human

Gender: male

Age: 69 years

Diagnosis: hepatic metastasized sigmoid carcinoma

Therapy: Liver metastasis resection

Medication: Exforge

Serology: HAV, HBV, HCV, HIV 1/2: negative

Cryopreservation and Thawing

Cryopreservation:

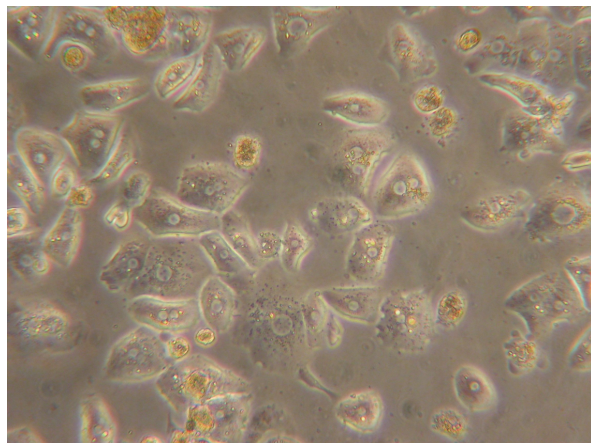
Date: Feb 19, 2014
Amount per vial: 10.6 x 10⁶ cells

Thawing:

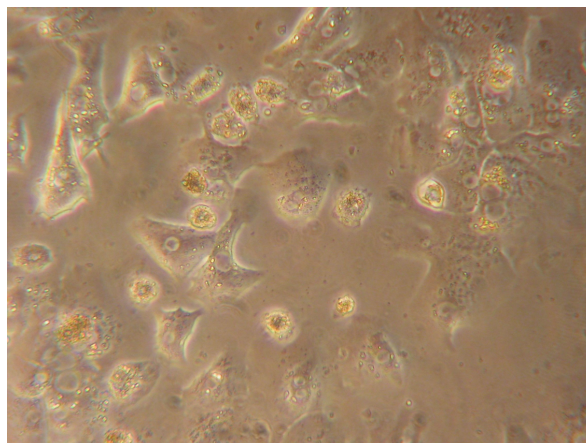
Post-thaw viability: 82.1 %
Post-thaw yield per vial: 7.68 x 10⁶ cells
Recovery: 72.5 %

2D culture

Phase contrast on day 1 after thawing
(24well plate)



Phase contrast on day 2 after thawing
(24well plate)



Recommended seeding density on collagen-coated plates: 24well plate – 540,000 cells/well.
Culture in Human Hepatocyte Maintenance Medium (HHMM).

Suspension culture

Viability test on orbital shaker (Eppendorf Thermomixer C, 1000 rpm at 37 °C with 0.5×10^6 cells in 0.5 ml HPM-Cryo):

Time (h)	0	1	2	3	4	5
Viability (%)	82.1	70.2	59.7	65.0	68.6	54.0

Note: Yield, viability, recovery and activity assays were performed at PRIMACYT using PRIMACYT's manual for thawing, plating and culture of primary cryopreserved hepatocytes.

Store at -150 °C or in the vapour phase of LN₂

This product should be considered as potential biohazard. Only intended for *in vitro* use.

Issued by: M. Thiede

Verified by: K.Damrau