

**HHCP Human Hepatocytes Cryopreserved Plateable  
Cell Specification – Certificate of Analysis (CoA)**

Lot HH160712

Batch Release: June 02, 2023

**Donor data**

Species: Human

Gender: male

Age: 69 years

Diagnosis: HCC (Hepatocellular carcinoma)  
Medical History: Hypertension, Cirrhosis  
(A level)

Therapy: resection

Medication: Tonotec, ACC, Pantozol, Novamin

Serology: HAV, HBV, HCV, HIV 1/2: negative

**Cryopreservation and Thawing**

**Cryopreservation:**

Date: July 17, 2016

Amount per vial:  $9.5 \times 10^6$  cells

**Thawing:**

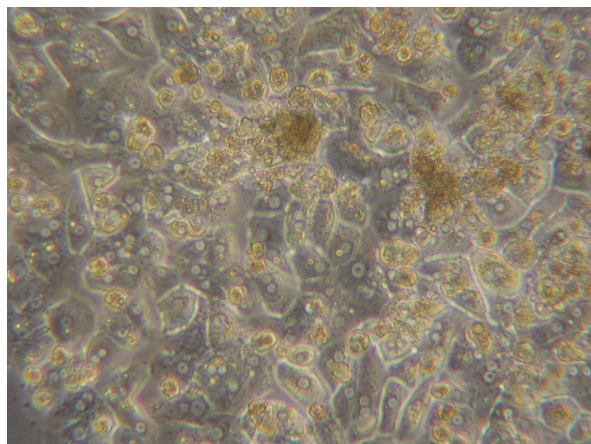
Post-thaw viability: 91.8 %

Post-thaw yield per vial:  $3.6 \times 10^6$  cells

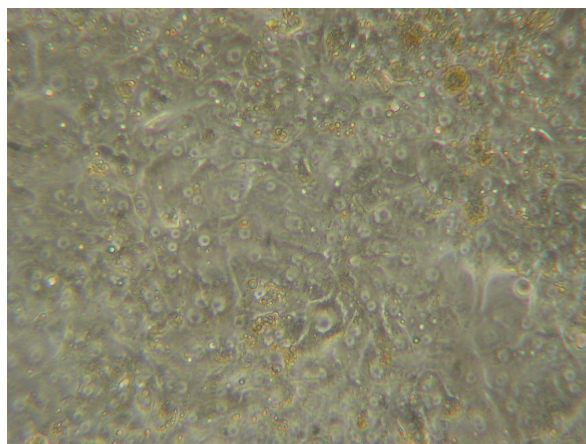
Recovery: 37.9 %

**2D culture**

Phase contrast on day 1 after thawing  
(24well plate)



Phase contrast on day 3 after thawing  
(24well plate)



Recommended seeding density on collagen-coated plates: 24well plate – 540,000 cells/well.  
Culture in Human Hepatocyte Maintenance Medium (HHMM).

**Suspension culture**

Viability test on orbital shaker (100-150 rpm at room temperature with  $0.54 \times 10^6$  cells in 0.5 ml HPM-Cryo):

Time (h)	0	1	2	3
Viability (%)	91.8	85.4	72.3	54.5

Note: Yield, viability, recovery and activity assays were performed at PRIMACYT using PRIMACYT's manual for thawing, plating and culture of primary cryopreserved hepatocytes.

**Store at -150 °C or in the vapour phase of LN<sub>2</sub>**

This product should be considered as potential biohazard. Only intended for *in vitro* use.

Issued by: M. Thiede

Verified by: K. Damrau