

**MHCP Mouse Hepatocytes Cryopreserved Plateable– Certificate of Analysis (CoA)**

Lot MH220815

Batch Release: July 03, 2023

**Donor data**

Species: Mouse (*Mus musculus*)  
Strain: CD-1

Gender: female  
Age: approx. 1 year

**Cryopreservation and Thawing**

**Cryopreservation:**

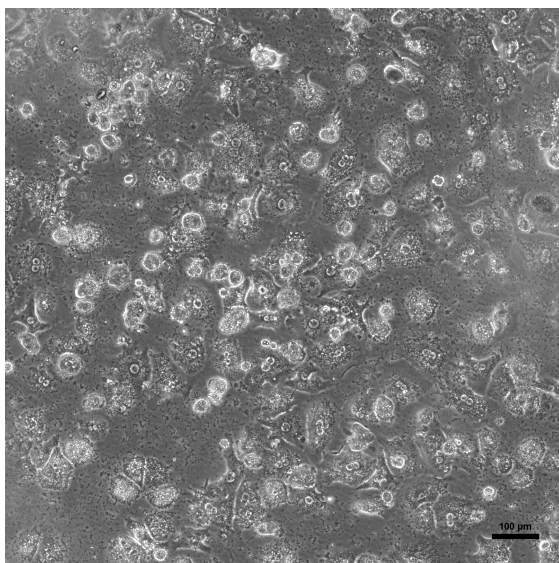
Date: Aug 15, 2022  
Amount per vial:  $7.1 \times 10^6$  cells

**Thawing:**

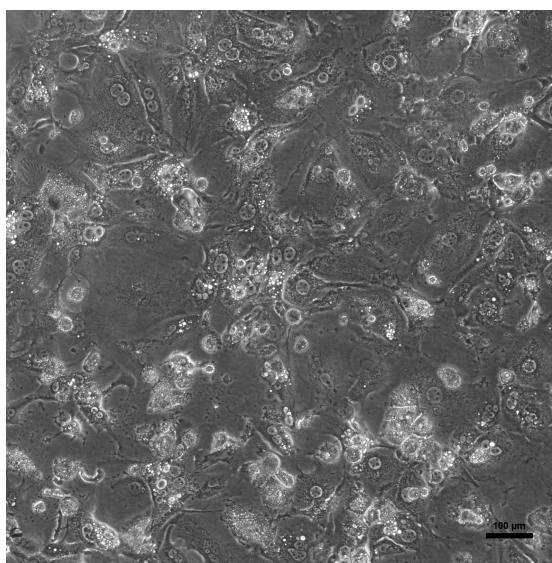
Post-thaw viability: 74 %  
Post-thaw yield per vial:  $2.7 \times 10^6$  cells  
Recovery: 38.2 %

**2D culture**

Phase contrast on day 1 after thawing  
(24well plate)



Phase contrast on day 3 after thawing  
(24well plate)



Recommended seeding density on collagen-coated plates:  
24well plate – 120,000 cells/well  
Culture in Human Hepatocyte Maintenance Medium (HHMM).

Note: Yield, viability, recovery and activity assays were performed at PRIMACYT using PRIMACYT's manual for thawing, plating and culture of primary cryopreserved hepatocytes.

**Store at -150 °C or in the vapour phase of LN<sub>2</sub>**

This product should be considered as potential biohazard. Only intended for *in vitro* use.

Detailed animal information and husbandry conditions			
Species	Mouse ( <i>Mus musculus</i> )		
Strain	CD-1, IGS (International Genetic Standard)		
Vendor	Janvier-Labs, Le Genest-Saint-Isle, France		
Food	Altromin Maintenance diet for rats/mice (ad libitum), Altromin, Lage, FRG		
Water	ad libitum		
Light/Dark cycle	07:00-19:00 light / 19:00-07:00 dark (12 hours light/dark)		
Temperature	20-24 °C		
Humidity	40-70 %		
Bedding	Hugro hemp bedding, Saerbeck, FRG		
Cage	Tecniplast Eurostandard Type III and Type IV incl. behavioural enrichments for the animals		
<p>Animals were housed under veterinary control and allowed to acclimate <math>\geq 7</math> days before use. Animal housing permits according to §11 Abs. 1 TSchG, dated March 20, 2017 and March 22, 2022 under supervision of Veterinary Office of Landkreis Ludwigslust/Parchim, FRG. Hepatocytes were obtained from a non-infectious, non-contagious, healthy animal. The animal does not originate from a facility conducting work or research with animal pathogens.</p>			
<table border="1"> <tr> <td>Issued by: M. Thiede</td><td>Verified by: K. Damrau</td></tr> </table>		Issued by: M. Thiede	Verified by: K. Damrau
Issued by: M. Thiede	Verified by: K. Damrau		