

SDRL-NPC Rat Cryopreserved Non-parenchymal Cells

Cell specification: Liver Sinusoidal Endothelial Cells + Kupffer Cells

Lot RLNPC 200226 P0-200311 Pool

Batch Release: April 29, 2021

Species: *Rattus norvegicus* forma domestica
CD IGS rat (Sprague Dawley) // CrI:CD(SD)

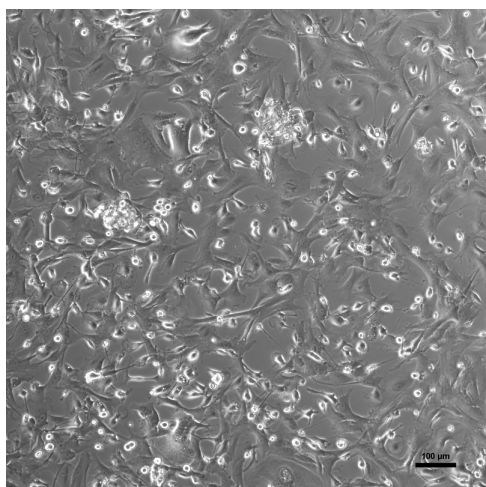
Gender: 5 females
Age: 4-6 months

Cryopreservation:
Passage 0 on: March 11, 2020
Number of cells per vial: 1×10^6 cells

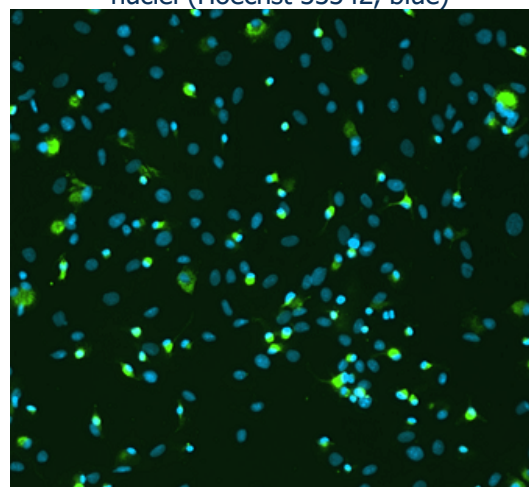
Thawing: n=1
Post-thaw viability: 90.5 %
Post-thaw yield per vial: 0.86×10^6 cells

Phagocytosis activity assay on day 3 of culture:
LPS stimulated: 50 % of cells with particle uptake
Non-stimulated: 30 % of cells with particle uptake

Phase contrast on day 3 after thawing



Fluorescence imaging after thawing:
KC specific antigen CD68 (green);
nuclei (Hoechst 33342, blue)



Note: Yield, viability, and recovery were determined at PRIMACYT using PRIMACYT's manual for thawing, plating and culture of cryopreserved non-parenchymal cells.

Store at -150 °C or in the vapour phase of LN₂

This product should be considered as potential biohazard. Only intended for *in vitro* use.

Detailed animal information and husbandry conditions

Species:	Rat (<i>Rattus norvegicus</i> forma domestica)
Strain:	CD IGS rat (Sprague Dawley) // CrI:CD(SD), IGS (International Genetic Standard)
Vendor:	Charles River Germany GmbH & Co. KG, Sulzbach, FRG
Food:	Altromin Maintenance diet for rats and mice (ad libitum), Altromin, Lage, FRG
Water:	ad libitum
Light/Dark cycle:	07:00-19:00 light / 19:00-07:00 dark (12 hours light/dark)
Temperature:	20-24 °C
Humidity:	40-70 %
Bedding:	Hugro hemp bedding, Saerbeck, FRG
Cage:	Techniplast Eurostandard Type III and Type IV including behavioural enrichments for the animals

Animals were housed under veterinary control and allowed to acclimate ≥ 7 days before use. Animal housing permit according to §11 Abs. 1 TSchG, dated March 20, 2017 under supervision of Veterinary Office of Landkreis Ludwigslust/Parchim, FRG. Liver cells were obtained from a non-infectious, non-contagious, healthy animal.

Issued by: T. Krimmling

Verified by: A. Ullrich