

**PHCP Chicken (Poultry) Hepatocytes Cryopreserved Plateable
Cell Specification – Certificate of Analysis (CoA)**

Lot PH220405 (Pool of 3)

Batch Release: August 16, 2022

Donor data

Species: Chicken (Novogen Brown Light)

Gender: female

Age: all 3 donors 16 days

Cryopreservation and Thawing

Cryopreservation:

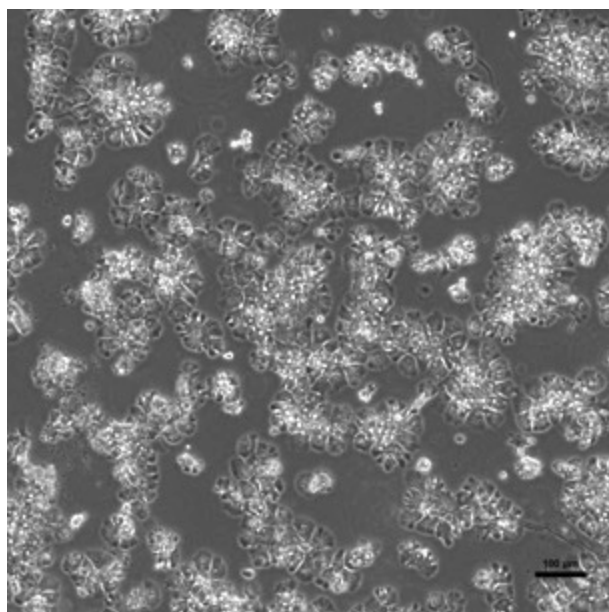
Date: April 5, 2022
Amount per vial: 10.1 x 10⁶ cells

Thawing: n=1

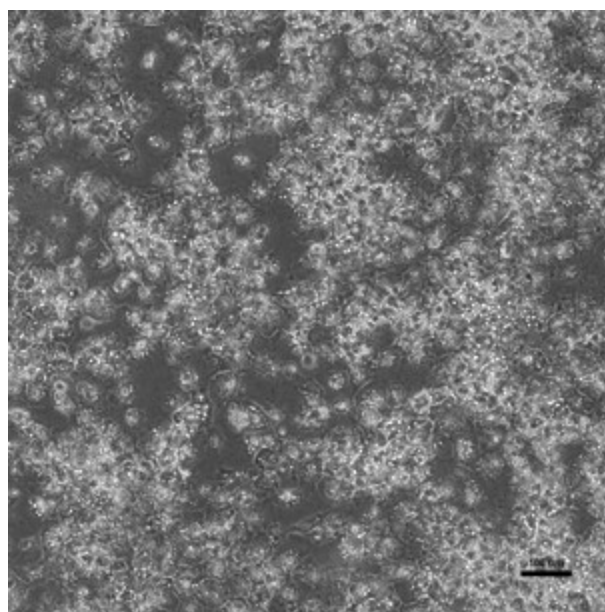
Post-thaw viability: 97.9 %
Post-thaw yield per vial: 5.3 x 10⁶ cells
Recovery: 53 %

2D culture

Phase contrast on day 1 after thawing
(24well plate)



Phase contrast on day 3 after thawing
(24well plate)



Recommended seeding density on collagen-coated plates:

24well plate – 300,000 cells/well

Culture in Human Hepatocyte Maintenance Medium (HHMM) with FBS.

Suspension culture

Viability test on orbital shaker (Eppendorf Thermomixer C, 1000 rpm at 37 °C with 0.5×10^6 cells in 0.5 ml HM-Cryo):

| | | | | | | |
|---------------|------|------|------|------|------|-----|
| Time (h) | 0 | 1 | 2 | 3 | 4 | 5 |
| Viability (%) | 97.9 | 95.9 | 97.3 | 96.4 | 96.9 | 100 |

Note: Yield, viability, recovery and activity assays were performed at PRIMACYT using PRIMACYT's manual for thawing, plating and culture of primary cryopreserved hepatocytes.

Store at -150 °C or in the vapour phase of LN₂

This product should be considered as potential biohazard. Only intended for *in vitro* use.

Issued by: A. Ullrich

Verified by: T. Krimmling